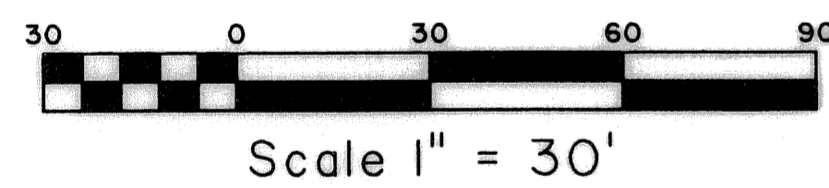
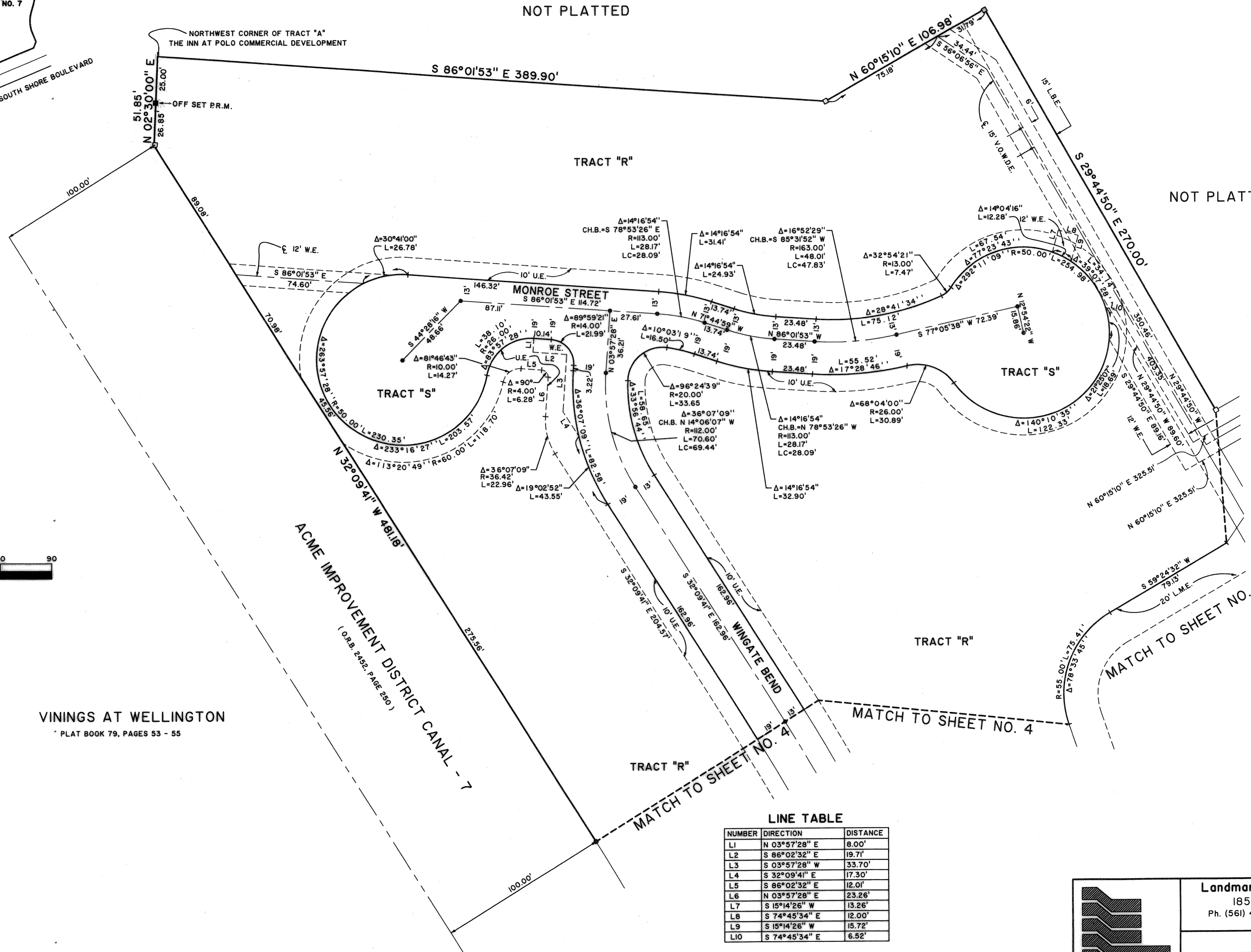
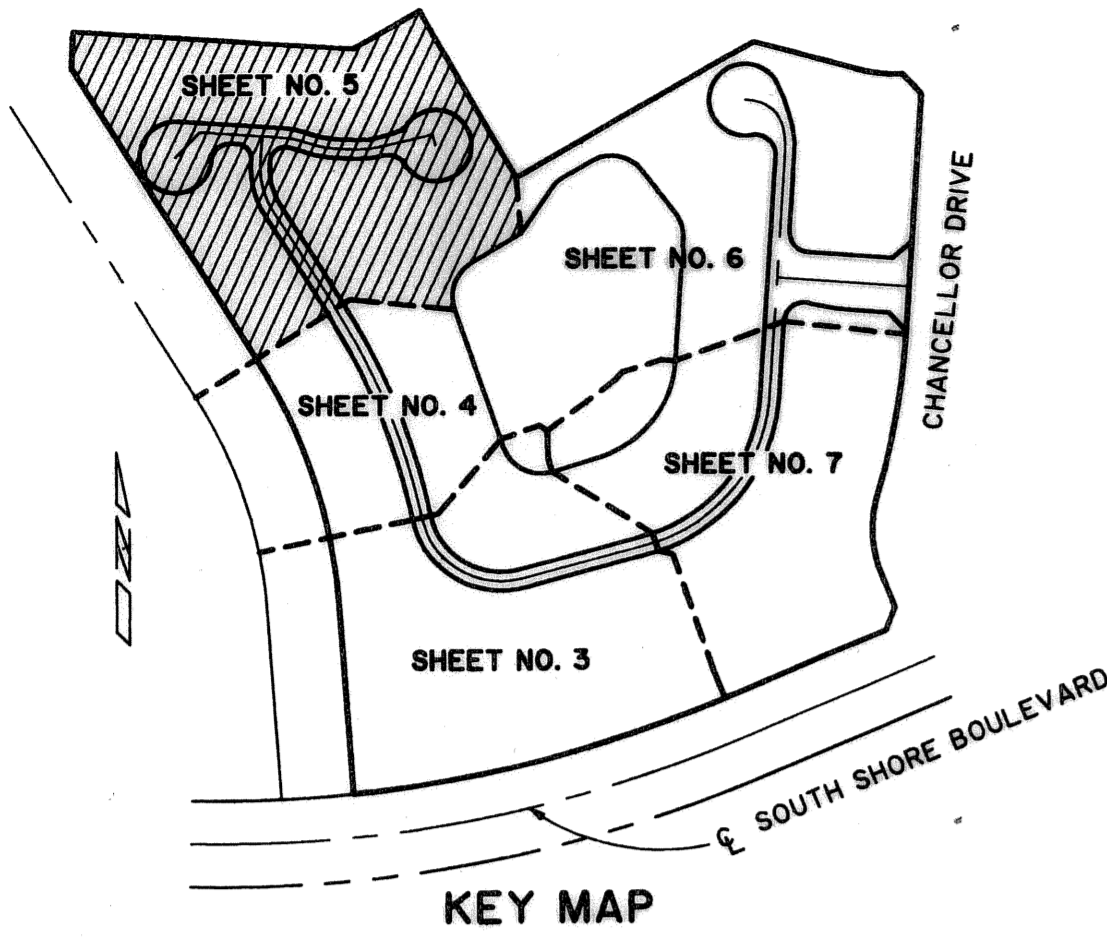


MAYFAIR AT WELLINGTON

BEING A REPLAT OF TRACT "A", THE INN AT POLO COMMERCIAL DEVELOPMENT,
AS RECORDED IN PLAT BOOK 89, PAGES 54 THROUGH 58, PUBLIC RECORDS OF
PALM BEACH COUNTY, FLORIDA AND LYING IN SECTIONS 10 AND 15, TOWNSHIP 44 SOUTH
RANGE 41 EAST, VILLAGE OF WELLINGTON, PALM BEACH COUNTY, FLORIDA.
SHEET 5 OF 7 OCTOBER 2004

175

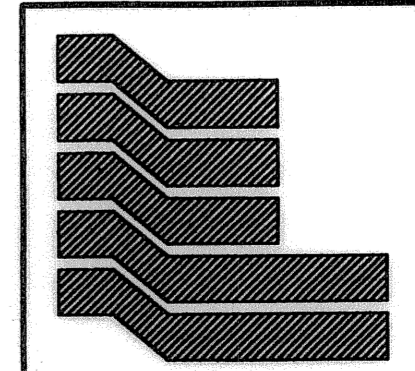
STATE OF FLORIDA SS
COUNTY OF PALM BEACH
THIS PLAT WAS FILED FOR RECORD AT _____
M. THIS _____ DAY OF _____ 2004
AND DULY RECORDED IN PLAT BOOK NO. _____
ON PAGE _____
DOROTHY H. WILKEN, CLERK OF THE CIRCUIT COURT
BY _____ D.C.



VININGS AT WELLINGTON
PLAT BOOK 79, PAGES 53 - 55

LINE TABLE

NUMBER	DIRECTION	DISTANCE
L1	N 03°57'28" E	8.00'
L2	S 86°02'32" E	19.71'
L3	S 03°57'28" W	33.70'
L4	S 32°09'41" E	17.30'
L5	S 86°02'32" E	12.01'
L6	N 03°57'28" E	23.26'
L7	S 15°14'26" W	13.26'
L8	S 74°45'34" E	12.00'
L9	S 15°14'26" W	15.72'
L10	S 74°45'34" E	6.52'



Landmark Surveying & Mapping Inc.
1850 Forest Hill Boulevard
Ph. (561) 433-5405 Suite 100 W.P.B. Florida
LB # 4396

MAYFAIR AT WELLINGTON